



LUXURY
COLLECTION™

105 HANSEN CREEK ROAD
MORGAN RIDGE – CHAPEL HILL

ERIKA & CO
FINE HOMES



A SANCTUARY IN NATURE

Enhancin' Life on Hansen. Follow the stone-columned entry along the blood-pressure-dropping road lined with cherry trees, which create a blanket of pink blossoms every spring, through this quiet hamlet. Cue the soundtrack of breeze and birdsong. Welcome home to this 4.5 acre oasis. Easy-going elevated style feels equal parts friendly and gracious. The open interiors are grounded in neutral tones; luxe materials; five-panel doors; subtle, stained oak; and rarefied attention to detail. Abundant windows and glass doors create a sunny state of mind and allow the sublime landscape to penetrate the rooms. The dining room, with coffered ceiling and tailored wainscoting, flows into the captivating family room comfort zone with verdant views, shiplap paneling, and a wall of glass-front built-ins. Serving-up deliciousness, the kitchen has bespoke cabinetry; an expansive island; honed granite and quartz counters; stainless appliances; and a command center desk with shelving. The hearth room heart of the home, open to the kitchen and breakfast, brings the cozy and wow-factor with a gas-log fireplace; shiplap wall; as well as vaulted paneled and beamed ceiling. A meditative space dreams are made of, the primary bedroom has a tray ceiling and windows framing blue skies and greenery. Tranquility reigns in the revamped primary bathroom with soothing tones; a stand-alone tub; seamless-glass shower; quartz countertops; honeycomb shades that filter natural light; Roborn mirrors with built-in lighting and fog control; sleek fixtures; and sconces. Thoughtfully planned, the primary custom closet system is an organizational dream. Main-level bedroom, plus second- and third-level happy hangout and multipurpose rooms, offer versatility. En-suite baths for every bedroom retreat, renovated with splashy tile and quartz countertops, are oh-so sweet. Inside and out are a choreographed range of thoughtful experiences. Outdoor space with indoor comfort awaits on the screen porch. Venture off the lounge-worthy deck to the sweeping, level lawn and patio bordered by a wooded wonderland and backing Hansen Creek. Sky's the limit when it comes to outdoor play space. The Triangle Land Conservancy preserves 55 surrounding acres. Spacious two-car garage with niche and epitome-of-functional storage cubbies. This ethereal hideaway accommodates breathing room and proximity. Charming downtown Carrboro is less than five minutes and UNC is ten minutes. A magical spot and true refuge, 105 Hansen Creek is a place purposely designed and built to imprint memories. Quite simply, Hansen will have you dancin'.

FIVE BEDROOMS (ONE
ON MAIN LEVEL)

FIVE BATHS

RECREATION ROOM

FRONT PORCH

SCREENED PORCH

DECK

PATIO

TWO-CAR GARAGE

~4.50 ACRES



DINING
HEARTH ROOM | KITCHEN
ENTRY





KITCHEN | BREAKFAST
HEARTH ROOM
FAMILY





KITCHEN | BREAKFAST | HEARTH ROOM
FAMILY
DINING





MAIN-LEVEL BEDROOM
EN-SUITE BATHROOM
ENTRY





PRIMARY BEDROOM SUITE
PRIMARY BATHROOM
WALK-IN CLOSET



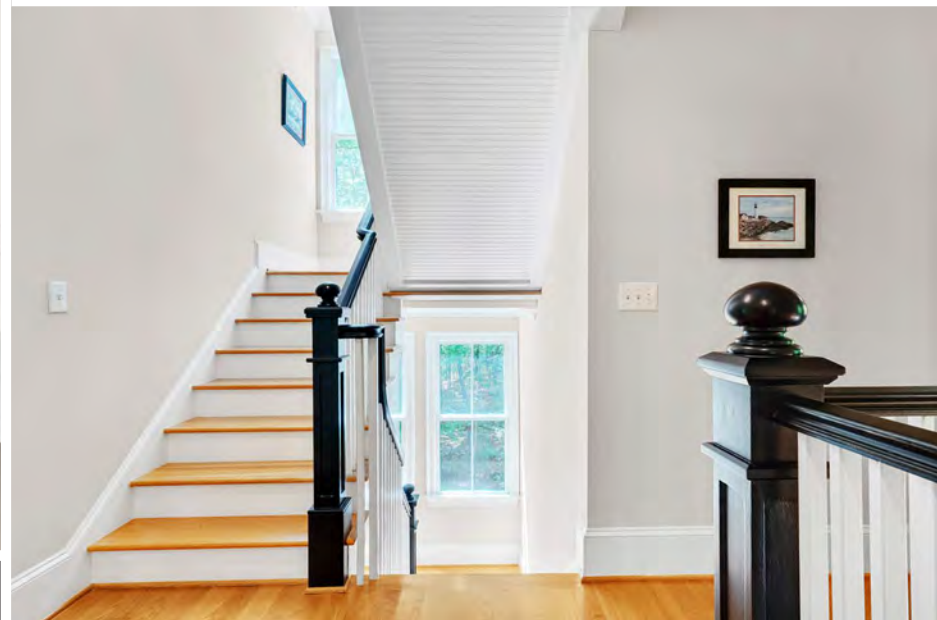


PRIMARY BEDROOM SUITE

PRIMARY BATHROOM

WALK-IN CLOSET

UPSTAIRS HALL



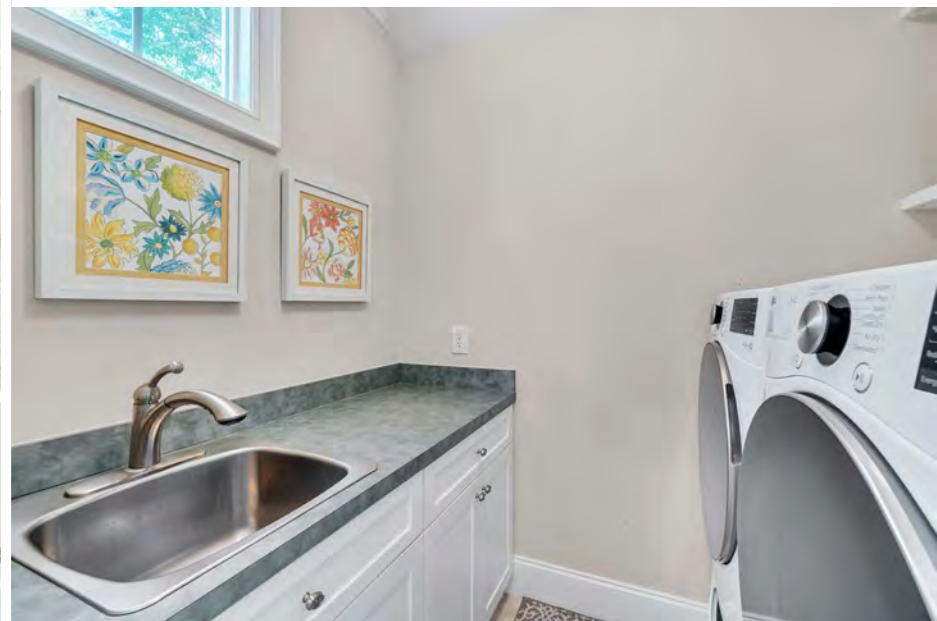


BEDROOMS WITH EN-SUITE BATHROOMS





SECOND-LEVEL BONUS ROOM + LAUNDRY
THIRD-LEVEL FLEX SUITE | 5TH BEDROOM +
BATHROOM





BUILT-IN STORAGE
DECK
SCREENED PORCH



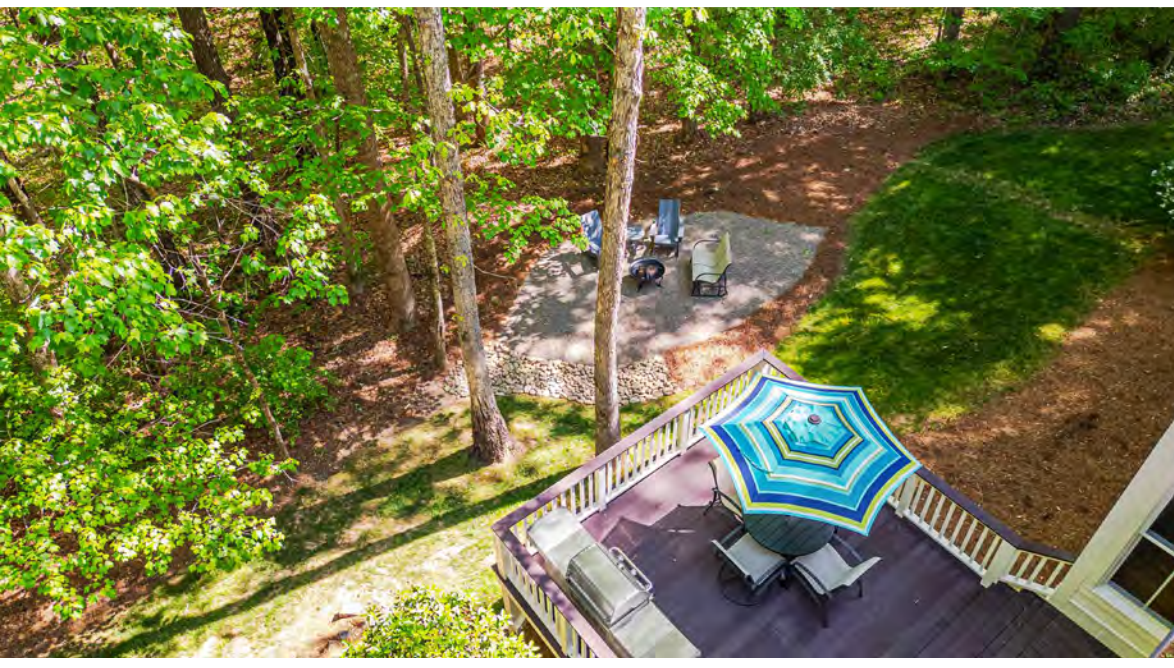


SCREENED PORCH
DECK
PATIO | YARD





FRONT PORCH
DECK
PATIO | YARD

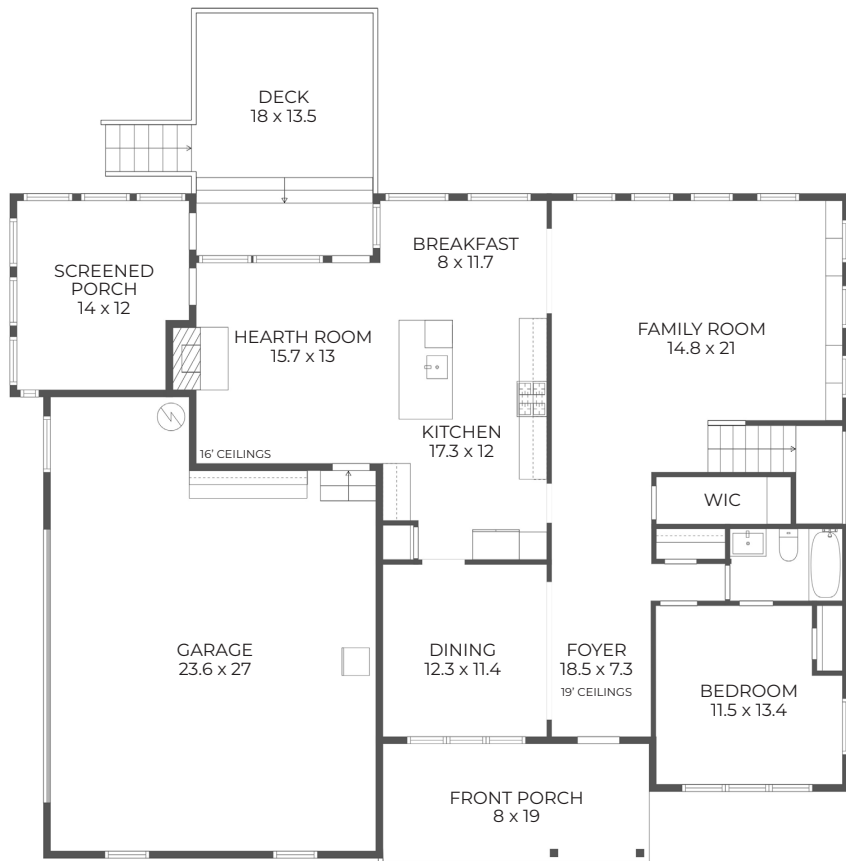


105 HANSEN CREEK ROAD, CHAPEL HILL

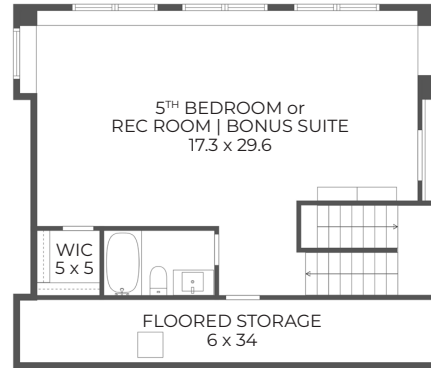


CLICK TO VIEW ALL PHOTOS + VIDEO:

<https://placepropertyphotography.hd.pics/105-Hansen-Creek-Rd>



FIRST FLOOR



THIRD FLOOR



SECOND FLOOR

LIVING AREA
 FIRST FLOOR 1573 SQ FT
 SECOND FLOOR 1881.5 SQ FT
 THIRD FLOOR 755.7 SQ FT
TOTAL LIVING AREA (ROUNDED) 4210 SQ FT

NON-LIVING AREA
 FRONT PORCH 152.8 SQ FT
 SCREENED PORCH 170.8 SQ FT
 GARAGE 716.5 SQ FT
 FLOORED STORAGE 205.2 SQ FT
 DECK 243 SQ FT

ERIKA & CO
 FINE HOMES

BERKSHIRE HATHAWAY | YORK SIMPSON UNDERWOOD REALTY
 HOMESERVICES

©2025 BHH Affiliates, LLC. An independently owned and operated franchisee of BHH Affiliates, LLC. Berkshire Hathaway HomeServices and the Berkshire Hathaway HomeServices symbol are registered service marks of Columbia Insurance Company, a Berkshire Hathaway affiliate.

ERIKA BUCHHOLTZ
 ADVISOR & REALTOR®

Voted Your FAVORITE 2017-2025
 Chapel Hill Magazine

919 219 7218
advisors@erikaco.com | erikaco.com